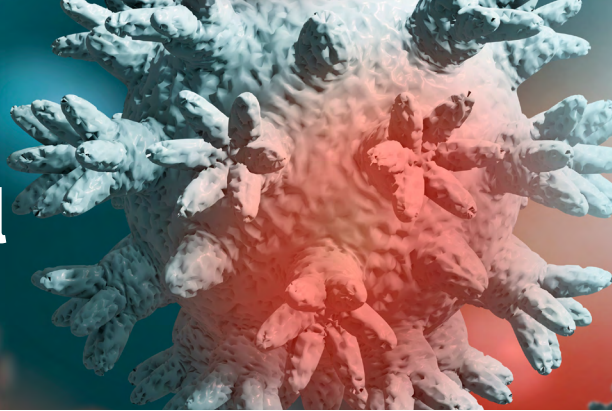
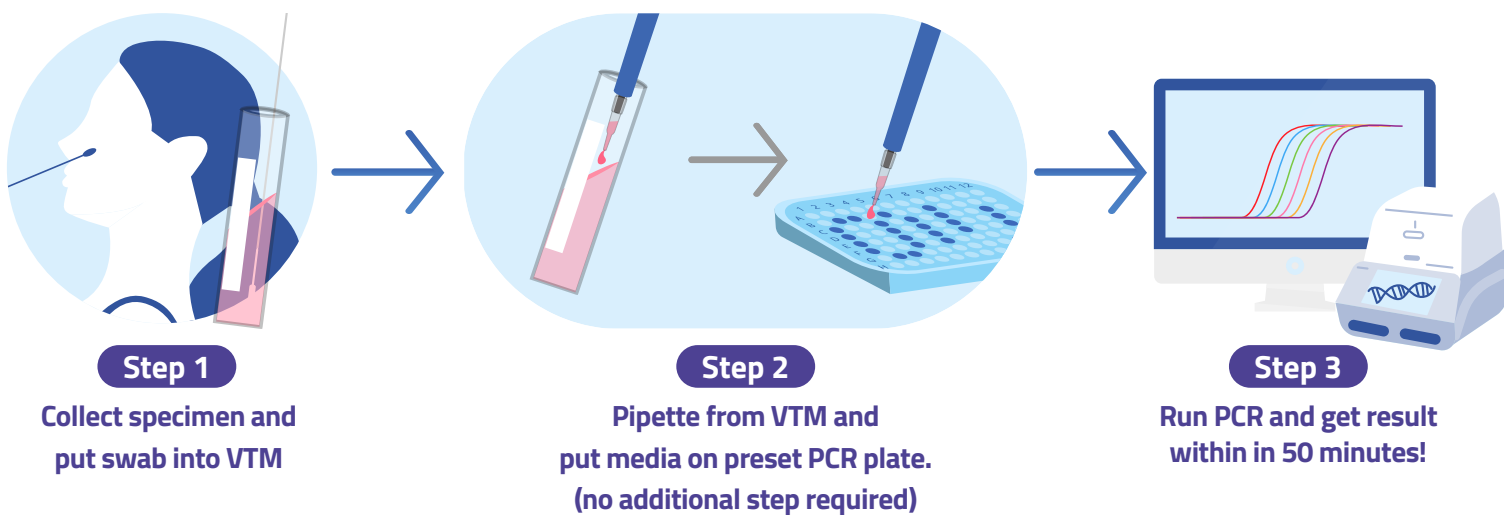


RNA Extraction-free Protocol for COVID-19



The RNA extraction-free protocol opens doors to **an innovative PCR method** that eliminates the extraction step when using the pre-existing 1copy™ COVID-19 qPCR **Multi/Triplex/4plex Kit!**

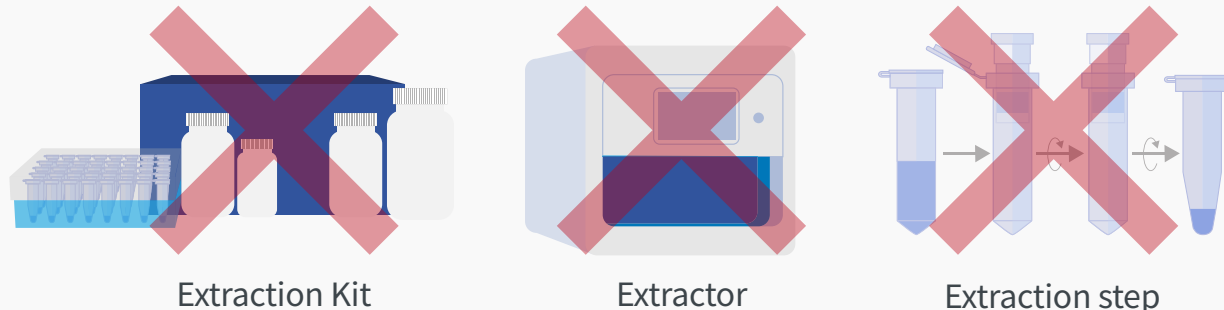
/3 Simple Steps



/Required Items

SWAB KIT	PCR KIT	PCR MACHINE
<p>Incore Inc. CORE-SWAB (cat no. IC-UTMS09)</p>	<p>1copy™ COVID-19 qPCR Multi / Triplex / 4plex Kit</p>	<p>Compatible with 6 PCR models LC480 / Rotor-Gene Q 5plex Quantstudio5 / ABI 7500 CFX96™ / qTOWER3</p>

NO NEED



/Benefits

The RNA extraction-free can be used to increase capacity for COVID-19 testing.

Conventional Procedure
Test up to **376*** samples in 8 hours



Extraction-free Procedure
Test up to **902*** samples in 8 hours

*Maximum possible number of samples tested using 1 PCR machine

Save Time

Elimination of RNA extraction will save ~2 hours of testing time.

Reduce Cost

There is no need to purchase additional RNA extraction kits. (\$1~3/test)

Minimize Error

The simplified procedure decreases experimental error and increases accuracy.

/Performance

Performance comparison of using extraction-free procedure and conventional procedure.

<1copy™ COVID-19 qPCR Triplex/4plex kit>

Concordance
100%
Agreement

		Conventional Procedure		
		Positive	Negative	Total
Extraction-free Procedure	Positive	34 (100%)	0	34
	Negative	0	70 (100%)	70
	Total	34	70	104

Positive Percent Agreement (PPA) : 100% [95% CI: 89.72% ~ 100.00%]

Negative Percent Agreement (NPA) : 100% [95% CI: 94.87% ~ 100.00%]

LoD
20
Copies/rxn

Target	E gene			N gene			ReRp gene		
Sample (copies/rxn)	20 copies	10 copies	0 copies	20 copies	10 copies	0 copies	20 copies	10 copies	0 copies
Average(Ct)	100%	94%	0%	96%	71%	0%	100%	90%	0%

[Click Here](#)
Clinical Evaluation Report

Our suggestion

- We highly recommend you to utilize the **Incore Core-medium system** in applying this protocol. The RNA Extraction-free Protocol, provided by 1drop Inc., has been evaluated by using an Incore Core-medium system.

- Prior to applying this protocol, it is required to carry out your own clinical evaluation to confirm performance and quality.

Incore Core-medium system and 1copy™ can both be purchased at 1drop Inc.

Please contact mdx@1drop.co.kr for further inquiries.

If you have any technical issues or questions, please contact mdx@1drop.co.kr.